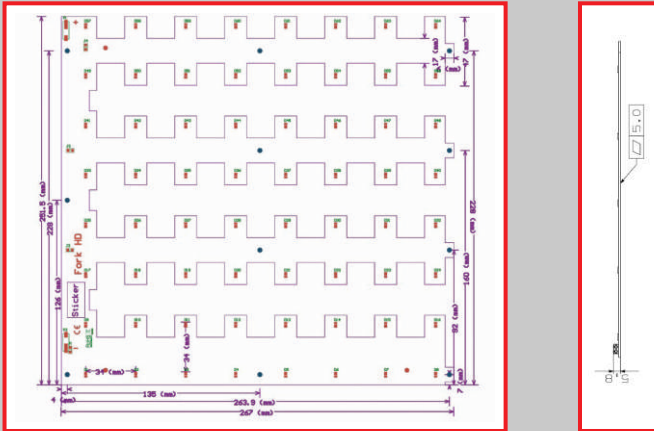


LED FORK HD

Product description



- Ideal for linear and panel lights
- Luminous flux range from 1400 – 4580 lm
- Efficacy of the module up to 190 lm/W
- High colour rendering index CRI > 80
- Small colour tolerance (MacAdam 3)
- Small luminous flux tolerances
- Colour temperatures from 2700 to 6500 K
- Good uniform light, even if several LED modules are used together in a line
- Self-cooling (no additional heat sink required)
- Push terminals for quick and simple wiring of LED module to LED module
- Simple installation (e.g. screws)
- Long life-time: 40,000 hours

Fork HD module with LED chips of the latest generation achieve maximum efficiency values and optimum light uniformity. The modules have been specifically developed for use in panel luminaires with diffused light. The product range covers colour temperatures Warm White 2700, 3000K, Neutral White 4000K and Cold White 5000, 6000K with CRI > 80 and module efficiency of up to 190 lm/W. The module is driven by constant current max 500mA/1200mA with voltage of max 25V. The design is improved for simple installation. The module family covers the standard –267mm/252mm – used in the usual 30/60 and 60/60 panels with diffused light.

| Fork HD | Photometric code | Typ. luminous flux at tp = 25 °C | Typ. Voltage at tp=25 °C | Typ. power consumption at tp = 25 °C | Luminous efficacy module at tp = 25 °C | Colour rendering index CRI |
|---|------------------|----------------------------------|--------------------------|--------------------------------------|--|----------------------------|
| Module Low cost Efficiency at constant current 500mA | 830 | 1400 Lm | 24.75 V | 12.38 W | 113 Lm/W | >80 |
| | 840 | 1470 Lm | 24.75 V | 12.38 W | 118 Lm/W | >80 |
| | 850 | 1530 Lm | 24.75 V | 12.38 W | 123 Lm/W | >80 |
| Module High Output at constant current 1200mA | 830 | 3650 Lm | 24.4 V | 29.3 W | 124 Lm/W | >80 |
| | 840 | 3840 Lm | 24.4 V | 29.3 W | 131 Lm/W | >80 |
| | 850 | 4000 Lm | 24.4 V | 29.3 W | 136 Lm/W | >80 |
| Module High Efficiency at constant current 500mA | 830 | 1980 Lm | 22.4 V | 11.2 W | 170 Lm/W | >80 |
| | 840 | 2040 Lm | 22.4 V | 11.2 W | 180 Lm/W | >80 |
| | 850 | 2110 Lm | 22.4 V | 11.2 W | 185 Lm/W | >80 |
| Module High Efficiency and High Output at constant current 1200mA | 830 | 4280 Lm | 24.65 V | 29.6 W | 144 Lm/W | >80 |
| | 840 | 4400 Lm | 24.65 V | 29.6 W | 148 Lm/W | >80 |
| | 850 | 4500 Lm | 24.65 V | 29.6 W | 152 Lm/W | >80 |